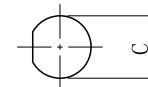
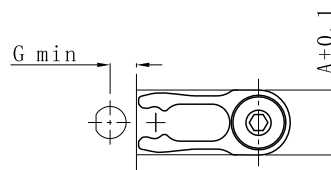
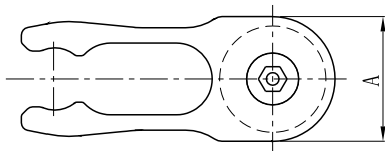
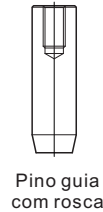
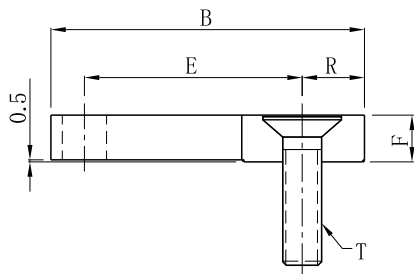




# Trava de Gaveta



## Características:

A estrutura do RRC simples e prática, e necessita de pouco espaço para instalação.



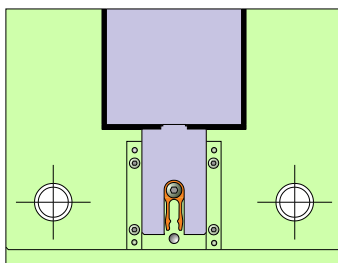
Como pedir: **RRC.246012** - 10 conjuntos



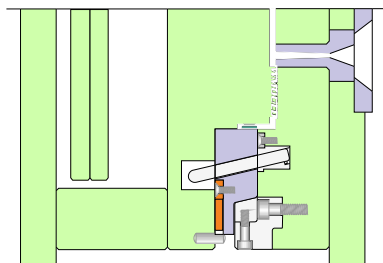
Consulte o estoque atualizado em:

[www.casafer.com.br](http://www.casafer.com.br)

Código	Dimensões									Força fixação máxima (Kgf)	Preço R\$
	A	B	C	E	F	G	H	R	T		
<b>RRC.123006</b>	12	30	6 × 20	21	5	4	16	6	M5 × 16	5	
<b>RRC.164008</b>	16	40	8 × 20	28	6	5	15	8	M6 × 25	7	
<b>RRC.205010</b>	20	50	10 × 24	34	8	6	17	10	M8 × 30	14	
<b>RRC.246012</b>	24	60	12 × 32	42	10	7	23	12	M10 × 40	21	
<b>RRC.328012</b>	32	80	16 × 40	56	12	9	27	16	M12 × 50	28	
<b>RRC.328016</b>	32	80	16 × 40	56	16	9	25	16	M12 × 50	38	



Molde fechado



Molde fechado

